

# KORG

**Using BauM Software's  
SongBook+ for the iPad®**

# Preliminary notice

## **Liability**

KORG shall not be liable for errors contained in information downloaded from the KORG Website, or otherwise obtained from the KORG Website in any manner. KORG will not in any event be liable for any direct, indirect, special, incidental or consequential damages whatsoever (including lost profits, lost data, or business interruption) related to any information or links provided by the KORG Website.

## **Data Handling**

Data may sometimes be lost due to incorrect user action. Be sure to backup important data. KORG will not be responsible for damages caused by data loss.

## **Disclaimer**

The information contained in this manual have been carefully revised and checked through. Due to our constant efforts to improve our products, the specifications might differ to those in the manual. KORG is not responsible for any eventual differences found between the specifications and the contents of the instruction manual - the specifications being subject to change without prior notice.

## **Trademarks**

iPad is a registered trademark of Apple, Inc. All other trademarks or registered trademarks are the property of their respective holders.

---

# Contents

---

<b>Using SongBook+</b> .....	<b>2</b>
What is the SongBook+ app. ....	2
KORG Pa-Series requirements. ....	3
Connecting the iPad to a KORG Pa-Series instrument .....	3
Testing the connection. ....	4
Configuring SongBook+ for communication. ....	5
Configuring the Pa-Series instrument for communication. ....	6
Pa4X, Pa3XLe, Pa900, Pa600, Pa300, HAVIAN 30 .....	6
Pa3X, Pa2X, Pa800, Pa500, Pa588, Pa1X .....	7
Synchronizing the SongBook with SongBook+ .....	11
Other operations .....	11

---

# Using SongBook+

---

Thank you for using a KORG Pa-Series Professional Arranger. This short guide will help you connect it to the SongBook+ app for iPad from BauM Software, and configure both the arranger and the software for communication and synchronization between SongBook and SongBook+ entries.

Please note that KORG does not endorse this software; this guide is only intended to help you use it with our instruments. KORG is not responsible for the SongBook+ app, and cannot give support to its user. All information about SongBook+ can be found in the web site of the developer.

## What is the SongBook+ app

Pa-Series instruments include a SongBook feature, that is basically a database letting you quickly find a song during a show, searching for it by name, author, genre or other search criteria. The SongBook+ app offers similar features to iPad users, adding the ability of reading music scores and lyrics in PDF or JPG format on a bigger screen.

SongBook+ and the Pa-Series's SongBook can be easily synchronized, matching the same entries and making the iPad a digital music book reader to be kept on the music stand, replacing traditional printed music books. You will be able to select Songs and Syles from the iPad, as you would by choosing a SongBook Entry on the Pa. At the same time (with some models), you will be able to jump to a SongBook+ entry by touching a SongBook Entry on your arranger's display.

## KORG Pa-Series requirements

The following table shows the requirements to use SongBook+ with a KORG Pa-Series instrument including the SongBook feature. Some models will allow both synchronization from the iPad or the Pa's SongBook; others will only allow synchronization from the iPad.

Pa-Series Model	Min. OS Version	iPad→Pa	Pa→iPad
Pa4X	1.0	•	•
Pa3X	1.63	•	•
Pa3XLe	1.0	•	•
Pa900	1.1	•	•
Pa600	1.2	•	•
Pa300	1.6	•	•
HAVIAN 30	1.0	•	•
Pa2X	1.0	•	
Pa800	1.0	•	
Pa500	1.0	•	
Pa588	1.0	•	
Pa1X	1.0	•	

Note: You can find the latest OS at our web site ([www.korg.com](http://www.korg.com)).

## Connecting the iPad to a KORG Pa-Series instrument

The USB DEVICE port of your Pa-Series instrument can be used to connect an iPad. For connection, you need the following items:

- A standard USB cable, similar to the one used to connect a USB printer to a computer.
- Since the iPad does not include a USB port as standard, you need one of the following adapter cables to add a USB port to the iPad.

iPad model	Adapter cable from Apple
With 30-pin connector (1st, 2nd and 3rd generation)	iPad Camera Connection Kit
With Lightning connector (Retina, mini, mini Retina, Air)	Lightning to USB Camera Adapter, or iPad Camera Connection Kit + Lightning to 30-pin Adapter

Hint: Compatible cables exist, but there is no warranty they work for this application.

As an alternative, you can connect the iPad to your Pa-Series instrument (excluding Pa300 and HAVIAN 30) via MIDI, by using a MIDI interface compatible with the iPad. In this case you will need:

- A pair of standard MIDI cables.
- The MIDI interface.
- If you are using an iPad with the Lightning connector, you also need the Apple Lightning to 30-pin Adapter.

## Testing the connection

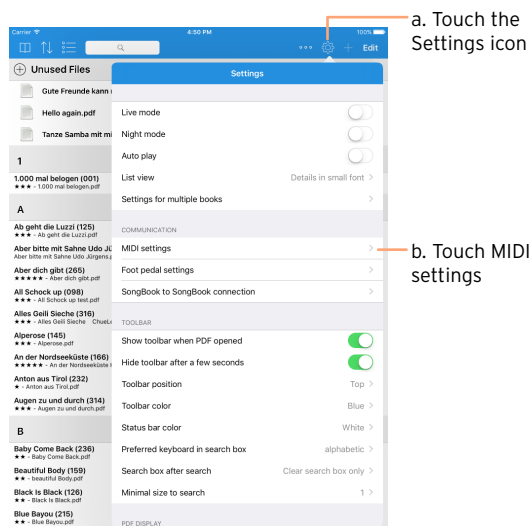
To be sure that the connection works, do the following:

- 1 Open the SongBook+ app.
- 2 Touch the **More** (☰) button to open the **More** menu.
- 3 Choose **MIDI / Bluetooth Monitor open** to open the **MIDI Monitor**.
- 4 Press some keys on the keyboard of the Pa. When the keys are pressed, the corresponding data should be shown in the MIDI Monitor. If this does not happen, touch the **Start new MIDI** button to reset the connection.

# Configuring SongBook+ for communication

Before the iPad and Pa-Series instrument can communicate, you must configure the MIDI channels.

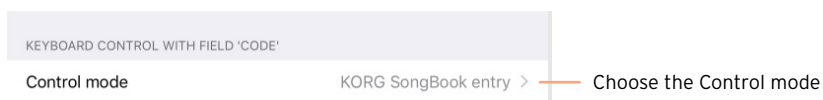
- 1 On the iPad, open the SongBook+ app.
- 2 In the toolbar, touch the **Settings** icon, then touch **MIDI settings** in the list that appears.



- 3 In the **MIDI settings** list, touch **Channel** and choose **16** to reserve MIDI channel #16 for communication with the Pa-Series instrument.



- 4 Still in the **MIDI settings** list, touch **Control mode** and choose **KORG SongBook entry** to tell SongBook+ to synchronize with SongBook Entries on the Pa.

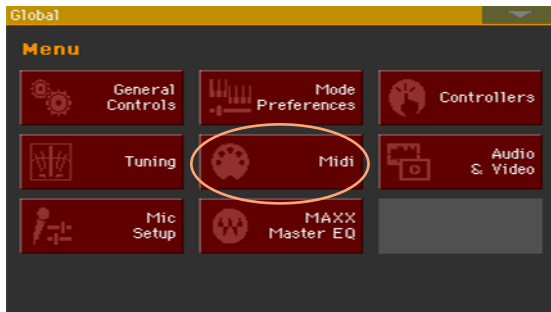


# Configuring the Pa-Series instrument for communication

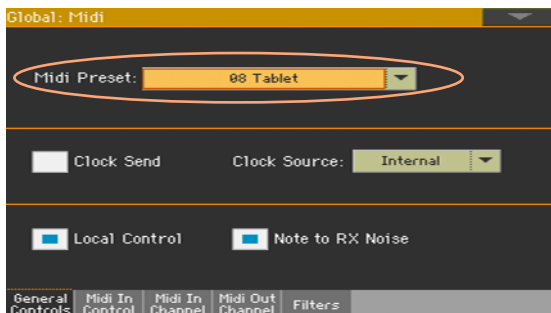
In your Pa-Series instrument, you have to set the Global MIDI channel to the same channel chosen in SongBook+ (in this example, channel #16). The procedures are different depending on your instrument.

## Pa4X, Pa3XLe, Pa900, Pa600, Pa300, HAVIAN 30

- 1 Press the **GLOBAL** button to access the **Global** pages.
- 2 If the menu is not shown, press the **MENU** button to see it.
- 3 Touch the **MIDI** option in the Global menu.



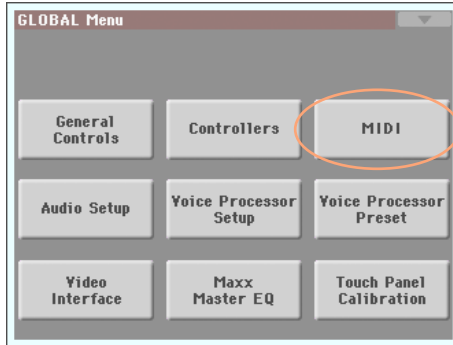
- 4 Touch the **General Controls** tab to go to the **General Controls** page, and choose the **Tablet** MIDI Preset. Then press **EXIT** to exit from the Global.



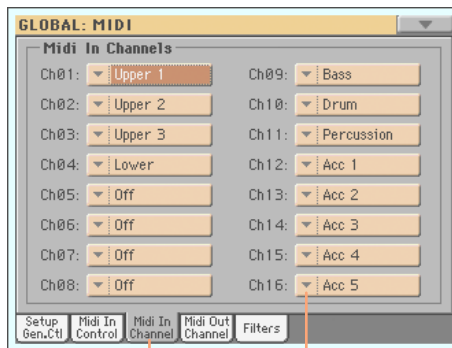


## Pa3X, Pa2X, Pa800, Pa500, Pa588, Pa1X

- 1 Press the **STYLE PLAY** button to select the **Style Play** mode.
- 2 Press the **GLOBAL** button to access the **Global** pages.
- 3 If the menu is not shown, press the **MENU** button to see it.
- 4 Touch the **MIDI** option in the Global menu.



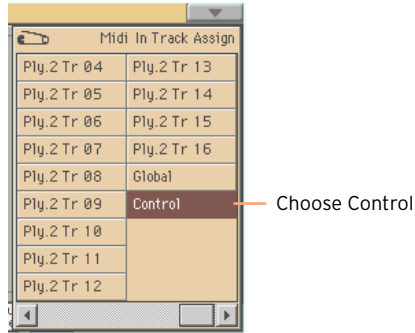
- 5 Touch the **Midi In Channel** tab to go to the **Midi In Channel** page, and touch the arrow next to **Channel 16**.



a. Touch MIDI In Channel

b. Touch Channel 16's menu icon

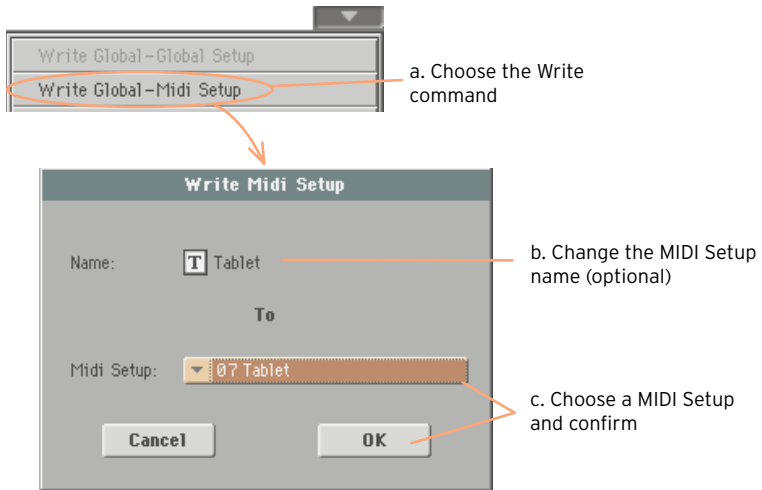
6 Assign the **Control** option to Channel 16.



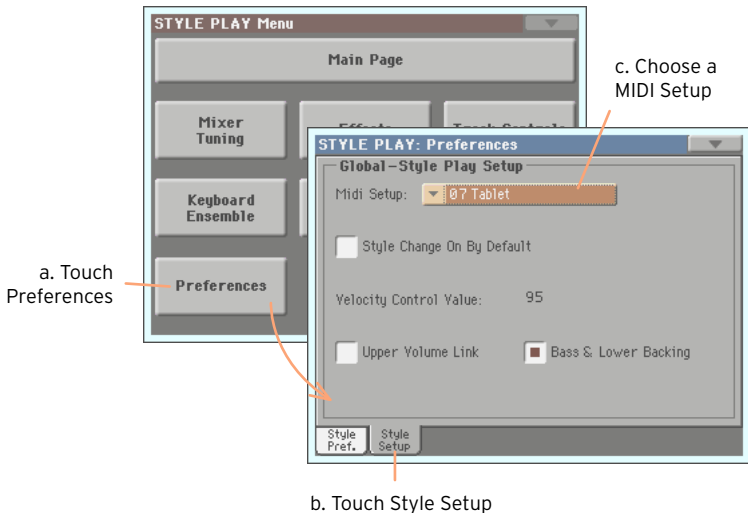
7 On the Pa, touch the **Midi Out Channel** tab to go to the **Midi Out Channel** page, and touch the arrow next to **Channel 16**. Assign the **Control** option to Channel 16.



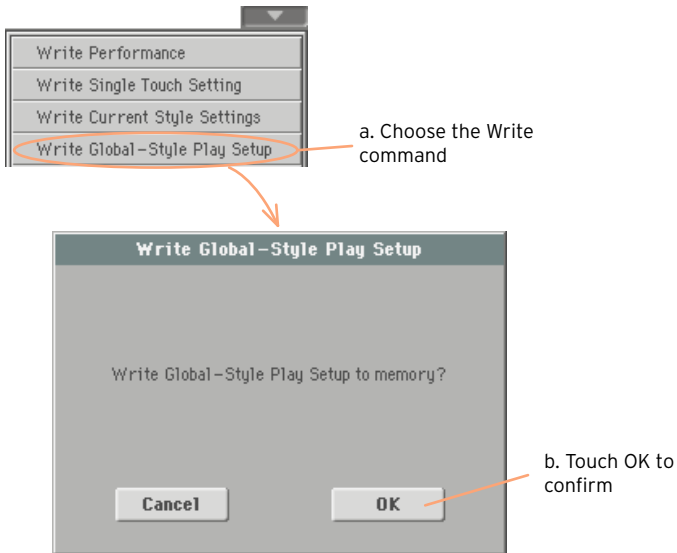
- 8 Now, save the settings to a MIDI Setup. From the **page menu**, choose the **Write Global - Midi Setup** command to open the corresponding dialog. If you want, edit the MIDI Setup's name. Then choose a **MIDI Setup** location where to save the settings, and confirm by touching **OK** and then **Yes**.



- 9 You will now assign the MIDI Setup to the current operative mode. Press **EXIT** to exit from the Global, then press **MENU** to access the edit menu of the Style Play mode. Touch **Preferences**, then the **Style Setup** tab to go to the **Style Setup** page. While in this page, choose the **MIDI Setup** you just saved.



- 10 From the **page menu**, choose the **Write Global - Style Play Setup** command, then touch **OK** to save the settings for the Style Play mode.



- 11 Press the **SONG PLAY** button to go to the **Song Play** mode, and repeat the above steps for this mode. At the end, you will save the settings to the Global - Style Play Setup.

## Synchronizing the SongBook with SongBook+

Synchronizing SongBook Entries on the Pa with entries in SongBook+ is easy, and can be done by assigning the same **ID Number/Code** to each entry. When ID Numbers/Codes are the same, you can choose a SongBook+ entry on the iPad, and the corresponding SongBook Entry on the Pa will be selected.

Conversely, with some models you can choose a SongBook Entry on the Pa, and the corresponding SongBook+ entry will be automatically selected on the iPad. Which model supports synchronization from the Pa is shown in “KORG Pa-Series requirements” on page 3.

The diagram illustrates the synchronization process. At the top, a black bar represents the Pa's SongBook entry, with 'Name: A day in Paradise' and 'Number: 203'. The 'Number' field is circled in orange. Below this, a white form represents the SongBook+ entry, with 'Title: A day in Paradise' and 'Code: 203'. The 'Code' field is also circled in orange. A callout box with a line pointing to both circles contains the text: 'Match the ID Number of the Pa's SongBook to the Code number of SongBook+'.

## Other operations

For information about the many other features of SongBook+, please check with BauM Software's own web site.





# **KORG**

**Address**

KORG ITALY SpA  
Via Cagiata, 85  
I-60027 Osimo (An)  
Italy

**Web**

[www.korg.com](http://www.korg.com)