

# KORG Pa-Series

## Extended Text Support

### Choosing the correct language

KORG Pa-Series instruments support Lyrics text in various languages. This however requires that you choose the correct language in your Pa, and save the TXT file with the correct text encoding from a personal computer.

To save a TXT file with the correct encoding, you can use a Windows PC or Mac with an advanced text editor. The two free applications we suggest you use are Don Ho's Notepad++ for Windows and Bare Bone's TextWrangler for Mac.

### Supported Pa-Series models

Models featuring extended Lyrics text are Pa3X, Pa3XLe, Pa900, Pa600/QT, Pa300, HAVIAN 30.

## Language Text Encoding

Please find in the following table the text encodings corresponding to the various languages supported by the Pa.

Language	Encoding (Notepad++)	Encoding (TextWrangler)
Dutch	Western European > Windows-1252	Western (Windows Latin 1)
English	Western European > Windows-1252	Western (Windows Latin 1)
Estonian	Baltic > Windows-1257	Baltic (Windows)
French	Western European > Windows-1252	Western (Windows Latin 1)
German	Western European > Windows-1252	Western (Windows Latin 1)
Greek	Greek > Windows-1253	Greek (Windows)
Italian	Western European > Windows-1252	Western (Windows Latin 1)
Polish	Central European > Windows-1250	Central European (Windows Latin 2)
Russian	Cyrillic > Windows-1251	Cyrillic (Windows)
Spanish	Western European > Windows-1252	Western (Windows Latin 1)
Turkish	Turkish > Windows-1254	Turkish (Windows Latin 5)

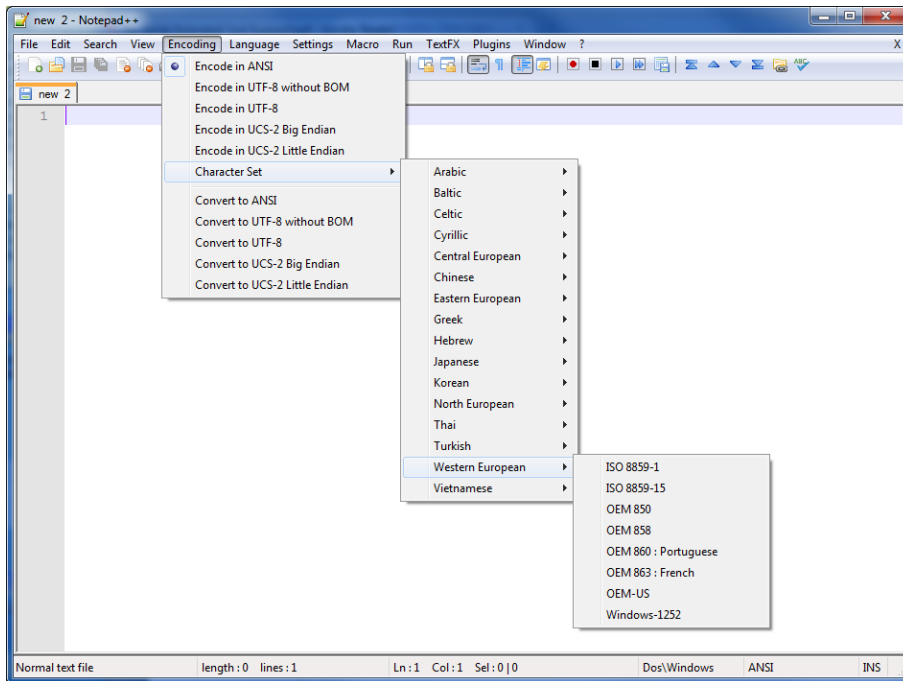
## Setting the language on the Pa

To correctly read text on your Pa, be sure to set the Language parameter to your language. This can be done in the **Global > General Controls > Interface** page.

1. Since the instrument must be restarted at the end of this procedure, be sure to first save any unsaved data.
2. While in the **Interface** page, select a language from the popup menu.
3. The **Change** command will start flashing. Touch it.
4. A message will ask you to reboot the instrument. Touch **OK** to close the message window.
5. Turn the instrument off, then on again.

## Editing the TXT file on a Windows PC

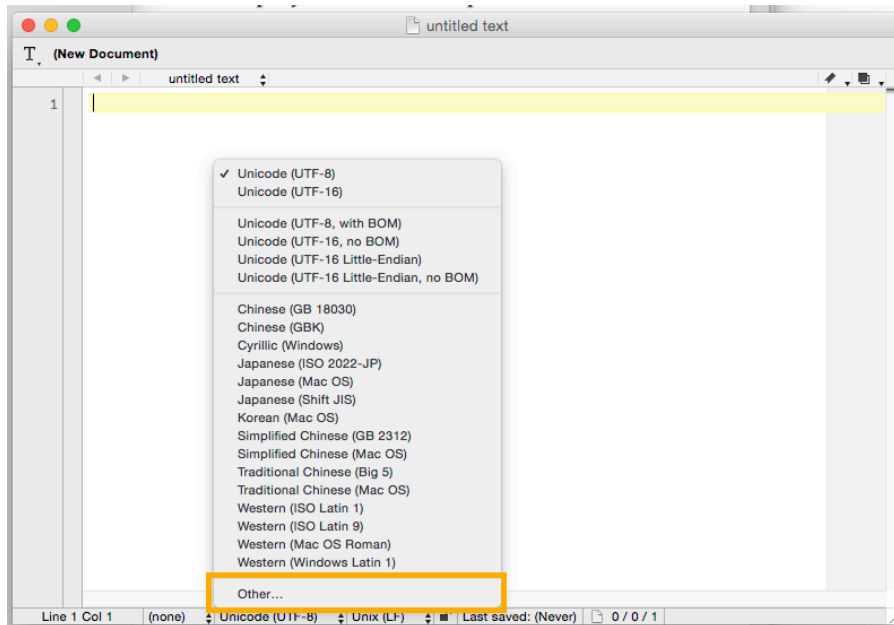
1. Launch Notepad++.
2. Open the original TXT file.
3. Choose **File > New** to open a new tabbed window containing the new TXT file.
4. Choose **Encoding > Character sets > [Your Language] > [Encoding]**.



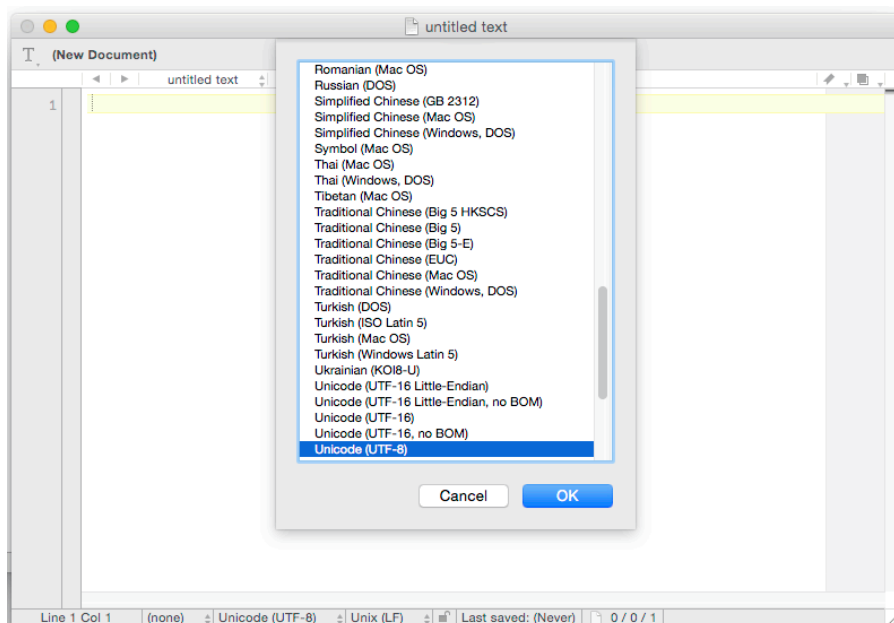
5. Click on the tab containing the original TXT file.
6. Select all and copy the selected text.
7. Click on the tab containing the new TXT file.
8. Paste the copied text.
9. Save and assign a name to the new TXT file.
10. Load the file into your instrument, and check it.

## Editing the TXT file on a Mac

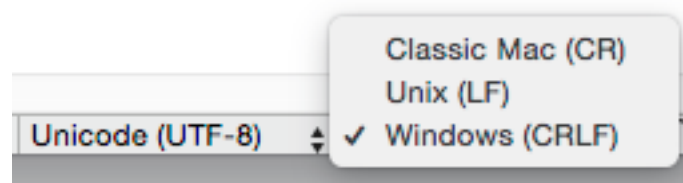
1. Launch TextWrangler.
2. Open the original TXT file.
3. In the status bar (in the lower part of the window) find the **Text Encoding** parameter (it usually defaults to Unicode or Western ISO). Click it to open the popup menu, and choose **Other > [Your Language and Encoding]**.



4. While in the dialog, choose your language encoding.



- Next to it in the status bar, find the **Line Break Type** parameter, usually defaulting to Unix (LF). Click it to open the popup menu, and choose **Windows (CRLF)**.

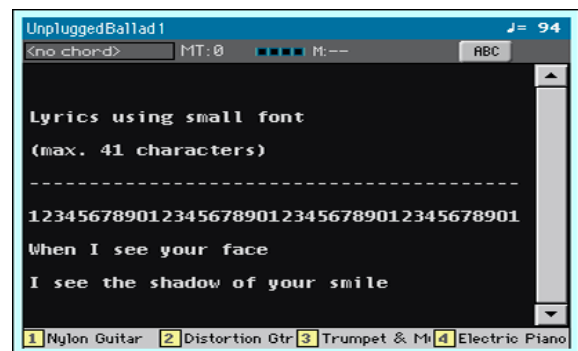
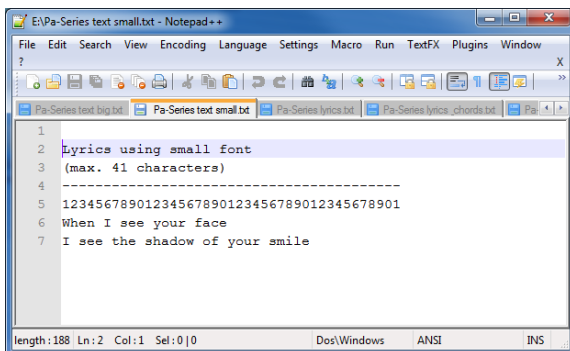


- Save a copy of the file by choosing **File > Save As**. Give the new file a name, and be sure that the **Save As** dialog box shows the correct Line breaks and Encoding.
- Load the file into your instrument, and check it.

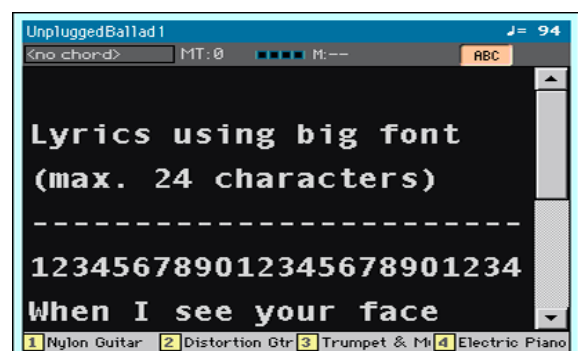
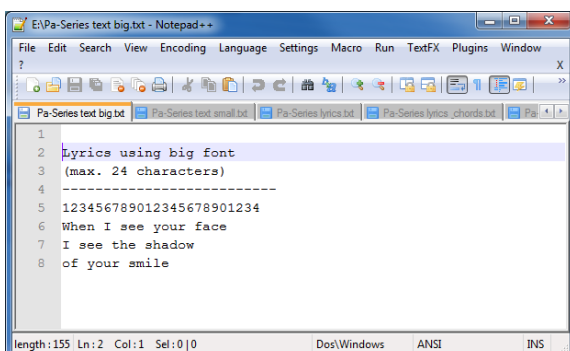
## Formatting text for the Pa

While in a text editor, text files must be formatted with non-proportional fonts (like Courier, Courier New, Letter Gothic, Lucida Sans, Menlo, Monaco, Vera Sans, or any other monospaced font). Up to 41 characters can fit a single line of text when using the smaller font size in the Pa, 24 when using the bigger font size.

- Small font in a text editor and the Pa:

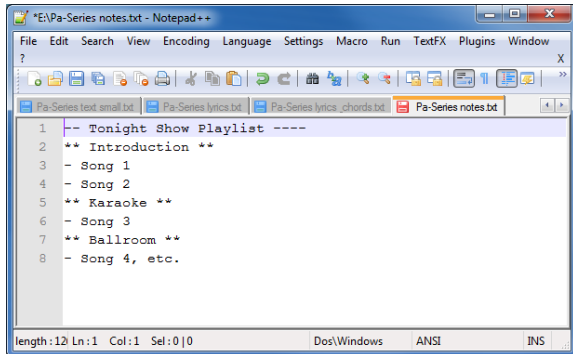


- Big font in a text editor and the Pa:

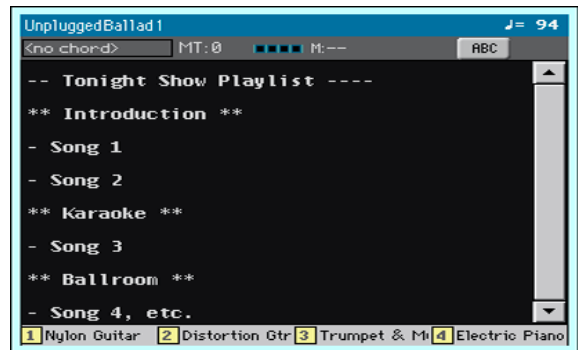


## Using imported text as a memo

Importing text files may be useful not only to load Lyrics, but also to load notes on the show. Please find below an example of playlist and gig outline.



```
*E:\Pa-Series notes.txt - Notepad++
File Edit Search View Encoding Language Settings Macro Run TextFX Plugins Window
?
Pa-Series text_small.txt Pa-Series lyrics.txt Pa-Series lyrics_chords.txt Pa-Series notes.txt
1 -- Tonight Show Playlist ----
2 ** Introduction **
3 - Song 1
4 - Song 2
5 ** Karaoke **
6 - Song 3
7 ** Ballroom **
8 - Song 4, etc.
length:12 Ln:1 Col:1 Sel:0|0 Dos/Windows ANSI INS
```



```
UnpluggedBallad 1 J= 94
<no chord> MT:0 M:-- ABC
-- Tonight Show Playlist ----
** Introduction **
- Song 1
- Song 2
** Karaoke **
- Song 3
** Ballroom **
- Song 4, etc.
1 Nylon Guitar 2 Distortion Gtr 3 Trumpet & M 4 Electric Piano
```