



USER'S GUIDE

KORG

CONTENTS

INTRODUCTION	3
SUPPORTED FORMATS	3
ITEMS IN THE SCREEN	3
AUDIO FORMAT CONVERSION AND EXPORT	4
ADVANCED SETTINGS	7
SONG PLAYBACK	8
PLAYING BACK A SONG.....	8
CONTENTS OF THE INFO VIEWER DISPLAY.....	8
CONTROLLERS YOU CAN USE.....	9
AUDIO DEVICE SETTINGS	10
SONG EDITING	11
BASIC OPERATION IN THE SONGLIST	11
SAVING A SONGLIST	11
OPENING A SONGLIST	11
RENAMING A SONG	12
EDITING TEXT DATA	12
EDITING THE SONG SETTINGS	13
DIVIDING A SONG.....	14
COMBINING SONGS.....	14
OTHER CONVENIENT FUNCTIONS.....	15
LIST OF SHORTCUTS	16

Introduction

AudioGate is an audio file conversion application that supports 1-bit audio. Audio files created by KORG's MR-1000 or MR-1 audio recorders can be converted and exported in the desired format. An individual file may be divided into smaller, separate files; and smaller files can be joined end to end into a larger single file. Editing operations such as Gain Adjustment and Fade In /Fade Out are also supported.

Supported formats

AudioGate can read, convert and export the following audio file formats:

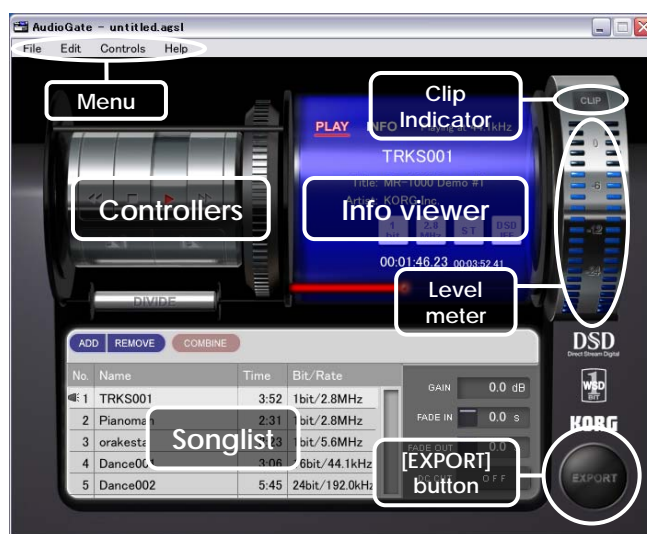
File format	Sample rate	Bit depth	Number of channels
WAV (extension: .wav)	44,100 Hz	48,000 Hz	2ch
BWF (extension: .wav)	88,200 Hz	96,000 Hz	
AIFF (extension: .aif/.aiff)	176,400 Hz	192,000 Hz	
DSDIFF (extension: .dff)	2,822,400 Hz		
DSF (extension: .dsf)	5,644,800 Hz		
WSD (extension: .wsd)		1 bit	

(*1) WAV/BWF only



In some cases, it may not be possible to successfully read files that were not created by the MR-1000, the MR-1, or AudioGate.

Items in the screen



Audio format conversion and export

AudioGate can convert an audio file on your computer to the desired format and export it. When working with files that were recorded using the KORG MR-1000 or KORG MR-1, you will need to copy the audio files from the project file folders on the MR-1000 or MR-1 to your computer's hard drive (desktop).

1. Drag and drop the desired audio files into the songlist.

Alternatively, you can click the [ADD] button and select the files.

The files in the list will be imported, and information such as the playback time and the format will be displayed.

note AudioGate calls each item of audio data in the songlist a "song."

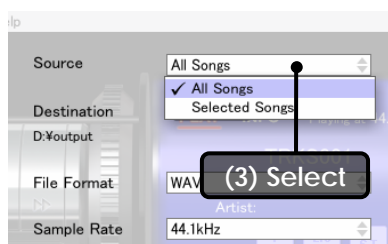


2. Click the [EXPORT] button.

The export file setting screen will appear.



3. Set the conversion source. Choose [All Songs] to export all songs in the songlist, or choose [Selected Songs] to export only selected songs in the list.



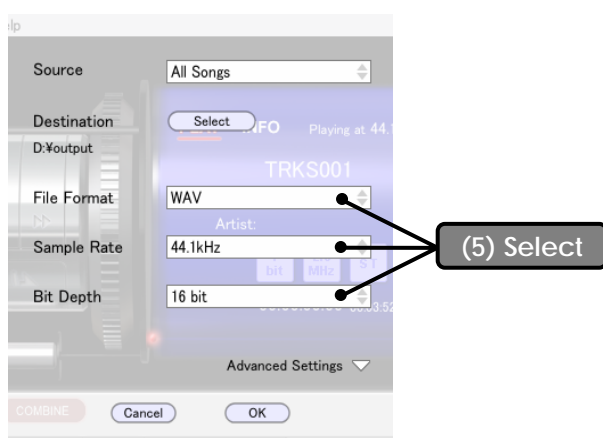
4. In the "Destination" area, click the [Select] button and select the export-destination folder.



5. Specify the desired output file format.

- ⚠ If the sample rate is set to "5.6MHz," the MR-1 will be unable to play back the file.
- ⚠ If the bit depth is set to "32 bit (float)" or if the file format is set to "AIFF", the MR-1000 and MR-1 will be unable to play back the file. The MR-1000 and MR-1 will also be unable to play back the file if you export a "16-bit" file at a sampling frequency of "88.2 kHz" or higher.


note You can change the detail settings of the conversion algorithm by selecting [Advanced Settings]. For more information, refer to "Advanced settings" (page 7).



6. Click the [OK] button.

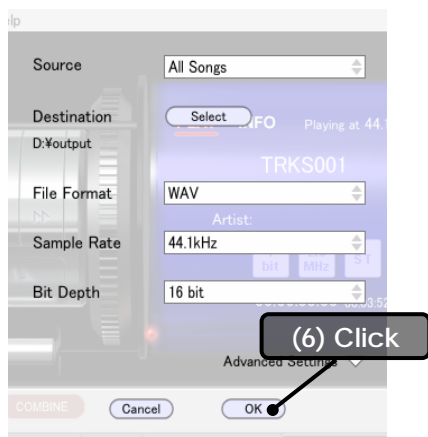
An indication of "Converting to ..." will appear in the upper right of the info viewer, and the file conversion and export process will begin.

note During the export process, you can halt the processing by clicking the [EXPORT] button once again.

 1-bit audio files may contain louder signals than PCM. When converting 1-bit audio files to PCM files, you might need to set GAIN settings down by approximately -3.0dB to avoid clipping (see page 13).

note If the input file and the output file have the same sample rates, and if the GAIN and DC CUT settings are kept to default (see page 13), AudioGate may switch to "direct exporting mode" where unnecessary recalculation is reduced. The level meter will be fixed to 0dB when AudioGate is running at "direct exporting mode."

 Output files larger than 4 GB cannot be copied to the MR-1000 or MR-1.

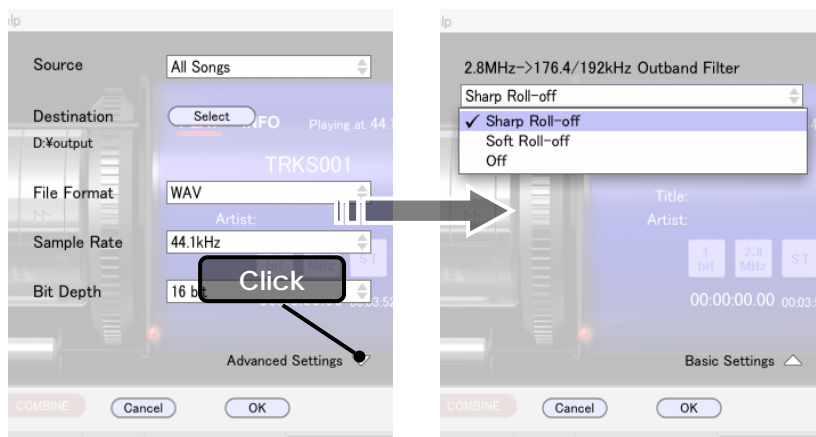


7. When the process is finished, a dialog box indicating "Export completed." will appear. Click the [OK] button.



Advanced settings

You can change the detail settings of the conversion algorithm by selecting [Advanced Settings] before exporting.




2.8MHz->176.4/192kHz Outband Filter

Sets the additional filter for the conversion from 1bit/2.8MHz songs to 176.4kHz or 192kHz PCM files.

- Sharp Roll-off: Applies a low-pass filter with sharp roll-off (-3dB@42kHz).
- Soft Roll-off: Applies a low-pass filter with soft roll-off (-3dB@50kHz).
- Off: The additional filter will not be applied.

Song Playback

AudioGate can play back songs that were imported into the songlist. This provides a useful way to check the content of a 1-bit audio file, or to specify editing points.

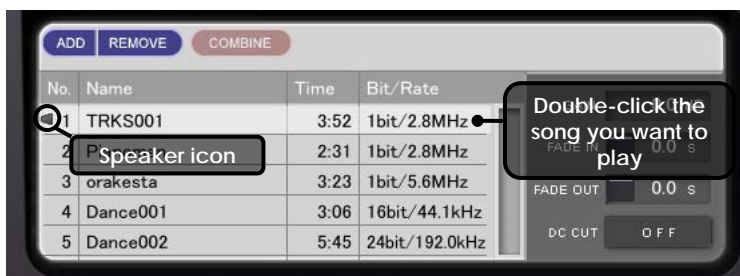
 The song playback functionality provided by AudioGate is a convenience feature that uses a high-speed filter. In order to experience the full sound quality of 1-bit audio, please use a device that supports 1-bit audio, such as the MR-1 or MR-1000.

note In AudioGate, the song that's playing (or paused for playback) is called the "current song." The current song is indicated by a speaker icon in the songlist, and the info viewer will show information about that song.

Playing back a song

Double-click a song in the songlist to make it the current song. Playback will begin automatically.

note If you experience problems with playback, such as if there is no sound or if there are frequent clicks or pops in the playback, refer to "Audio device settings" (page 10).



Contents of the info viewer display

The info viewer shows information about the current song.



Sample rate of the audio device

Indicates the sample rate of the audio device. The current song is converted to this sample rate in realtime as it plays.

Song name

Indicates the name of the current song.

Text data

Indicates the title and artist name of the current song.

Format

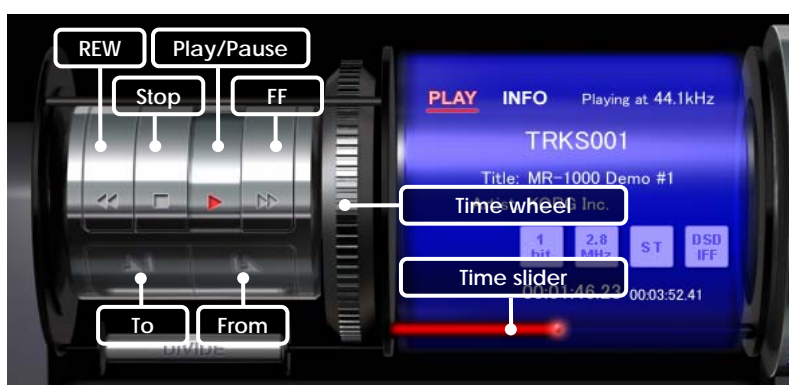
Indicates the bit depth, sample rate, number of channels, and file format of the current song.

Time information

Indicates the playback time and the current playback location of the current song.

Controllers you can use

You can use the following controllers to control the playback.



[Play/Pause] button

Switches the current song between playback and pause.

[Stop] button

Stops playback of the current song.

[FF] button

Pressing and releasing this button will advance the playback from the current song to the next song in the songlist. By holding down this button you can fast-forward the playback point in the current song.

[REW] button

Pressing and releasing this button will switch the playback from the current song to the previous song in the songlist. By holding down this button you can rewind the playback point in the current song.

[To] button

If you click this while paused, a two-second region ending at the currently stopped location will play.

[From] button

If you click this while paused, a two-second region starting at the currently stopped location will play.

Time wheel

You can drag this upward or downward to make fine adjustment to the playback point.

Time slider

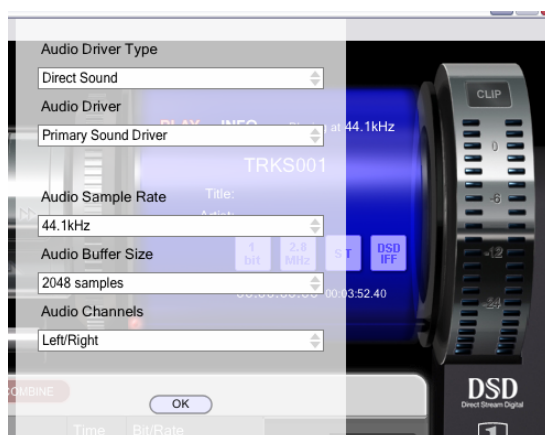
This indicates the playback point. You can change the playback point by dragging this to left or right.

Audio device settings

From the menu, choose [Edit]-[Preferences...] (Mac: [AudioGate]-[Preferences...]) to access the audio device settings. If the song does not play correctly, please check these settings to make sure that each item has the appropriate setting.



Fast CPU is required for stable playback 1-bit audio files. If there are frequent clicks or pops in the playback, you may improve the performance by setting the audio sample rate lower and/or by setting the audio buffer size larger.



Song editing

AudioGate lets you divide or combine songs in the songlist. This allows you to export only the desired region from an audio file, or to combine multiple consecutively-recorded files into a single file before you export it. You can also edit the gain, fade, and DC cut settings of each song, and edit text data such as the title and artist name.

Basic operation in the songlist

Add a song

Click the [ADD] button and select a file, or drag and drop an audio file from your computer into the songlist.

Select a song

Click the song. To select multiple songs, hold down the Ctrl key (Mac: Command key) and click. The currently selected song is displayed in focus.

Remove a song

Select the song, and click the [REMOVE] button.

Rearrange the songs

Drag the selected song up or down in the list to move it.

Saving a songlist

From the menu, choose [File]-[Save Songlist As...] and specify a file name and a save-location. Songlist files will have an extension of ".agsl".

Opening a songlist

From the menu, choose [File]-[Open Songlist] and specify a songlist file that you saved.

note If the current songlist has not yet been saved, a message of "Save the current songlist before opening?" will appear. Choose [Save] if you want to save the current songlist, or [Don't Save] if you don't want to save it.



note If an audio file cannot be found because it has been moved or deleted, the song name is displayed in red. You can't play or export a song that is displayed in red.

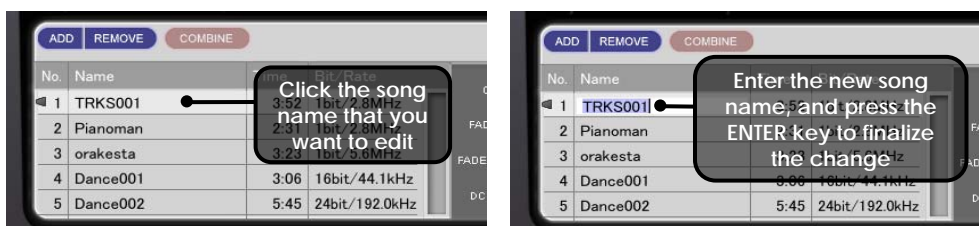
note Even if AudioGate is not running, you can automatically start up AudioGate and load a songlist by drag-and-dropping the desired songlist file (.agsl) into the AudioGate icon.

Renaming a song

When you click the song name in the songlist (or double-click the song name in the info viewer), the text will become editable. After you've finished editing the name, use the Enter key to finalize the change.


note The song name is used as the name of the output file when exporting.

-  You can't rename a song using the same name as another song in the list.
-  Only alphabetical and numeric characters can be used in a song name. You cannot enter double-byte characters such as Japanese.



Editing text data

You can edit the text data of the current song (the song title and the artist name). When a file is exported, this information is embedded in the header of the exported file.

-  Only alphabetical and numeric characters can be used in text data. You cannot enter double-byte characters such as Japanese.

1. Double-click a song in the songlist.
That song will become the current song, and the song information will appear in the info viewer.



2. In the info viewer, click the Title field to make the song title editable. When you're finished editing, press the Enter key to finalize the change.



3. In the same way, click the Artist field and edit the artist name.



If you click the [INFO] tab in the info viewer, you will also be able to edit the "Genre" (musical style), "Location" (recording location), "RecDate" (date of recording), and "RecTime" (time of recording) information, but depending on the format of the exported file, this information may not be embedded in the header.



Editing the song settings

Various settings for the currently selected song are shown at the right of the songlist. You can edit these settings by double-clicking them and entering a value (or clicking a button). These settings are reflected when you play back or export the song.



GAIN

Specify the volume level of the song in a range of -24.0 dB~+24.0 dB. Adjust this so that the clip indicator does not light during playback or during exporting.

FADE IN

This specifies the shape of the envelope used for fade-in, and the time duration (0.0 seconds--10.0 seconds) over which the fade-in is completed.

FADE OUT

This specifies the shape of the envelope used for fade-out, and the time duration (0.0 seconds--10.0 seconds) over which the fade-out is completed.

DC CUT

Normally you will leave this "OFF" (disabled). If the song file contains a DC offset, you can turn this "ON" to remove the offset. While often inaudible, a DC offset can reduce the available headroom before clipping, and can affect the sound quality in other ways.

Dividing a song

You can divide the current song into two at the currently stopped point.

1. Use the song playback functions to move to the point at which you want to divide the song.
2. Make sure that the playback is paused, and click the [DIVIDE] button.
You will see that the song has been divided in the songlist.

note Text data and song settings will generally be carried over into both songs following the Divide operation.

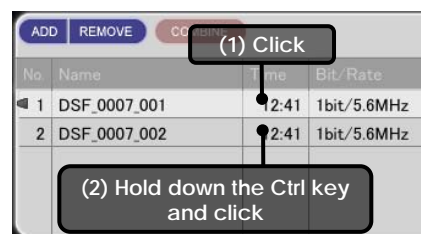


Combining songs

Combining songs splices the end of one song directly to the beginning of another song. Here's how you can combine two or more songs into a single song.

1. In the songlist, click a song to select it.
2. Hold down the Ctrl key (Mac: Command key), and click other songs to select them.
3. Click the [COMBINE] button.

You will see that the songs have been combined in the songlist.



⚠ You can use the "Combine" function to join together recordings that were not originally separated by the MR recorder's automatic split function, but some slight noise may be introduced at the point where the songs are joined.



You can't combine songs of differing formats.



Text data and song settings will generally be taken from the top song in the list.

Other convenient functions

Reverting an edit (Undo)

By choosing the menu command [Edit]-[Undo], you can revert to the state prior to executing the most recent editing operation.

Re-executing the edit (Redo)

By choosing the menu command [Edit]-[Redo], you can re-execute the operation that was reverted by the Undo command.

List of shortcuts

Function	Windows	Mac
Open a songlist	Ctrl + o	Command + o
Save the songlist	Ctrl + s	Command + s
Save the songlist as...	Ctrl + Shift + s	Command + Shift + s
Add a song	Ctrl + Shift + n	Command + Shift + n
Remove songs	Ctrl + Backspace	Command + Backspace
Switch the info viewer display	Ctrl + i	Command + i
Export	Ctrl + e	Command + e
Exit AudioGate	Ctrl + q	Command + q
Undo the edit	Ctrl + z	Command + z
Redo the edit	Ctrl + Shift + z	Command + Shift + z
Cut text	Ctrl + x	Command + x
Copy text	Ctrl + c	Command + c
Paste text	Ctrl + v	Command + v
Divide the song	Ctrl + d	Command + d
Combine songs	Ctrl + g	Command + g
Make audio output settings	Ctrl + ,	Command + ,
Play/pause the song	Space	Space
Stop the song	Ctrl + Shift + ←	Command + Shift + ←
Move to the next song	Ctrl + →	Command + →
Move to the previous song	Ctrl + ←	Command + ←
Move the stop point 0.05 seconds forward	→	→
Move the stop point 0.05 seconds backward	←	←
Move the stop point 1 second forward	Shift + →	Shift + →
Move the stop point 1 second backward	Shift + ←	Shift + ←
Move the playback point forward (FF)	→	→
Move the playback point backward (REW)	←	←
Play from the stop point	f	f
Play to the stop point	t	t
Display the operating manual	Ctrl + /	Command + /